

Construction Services

Active Projects by Project Managers

May 2022

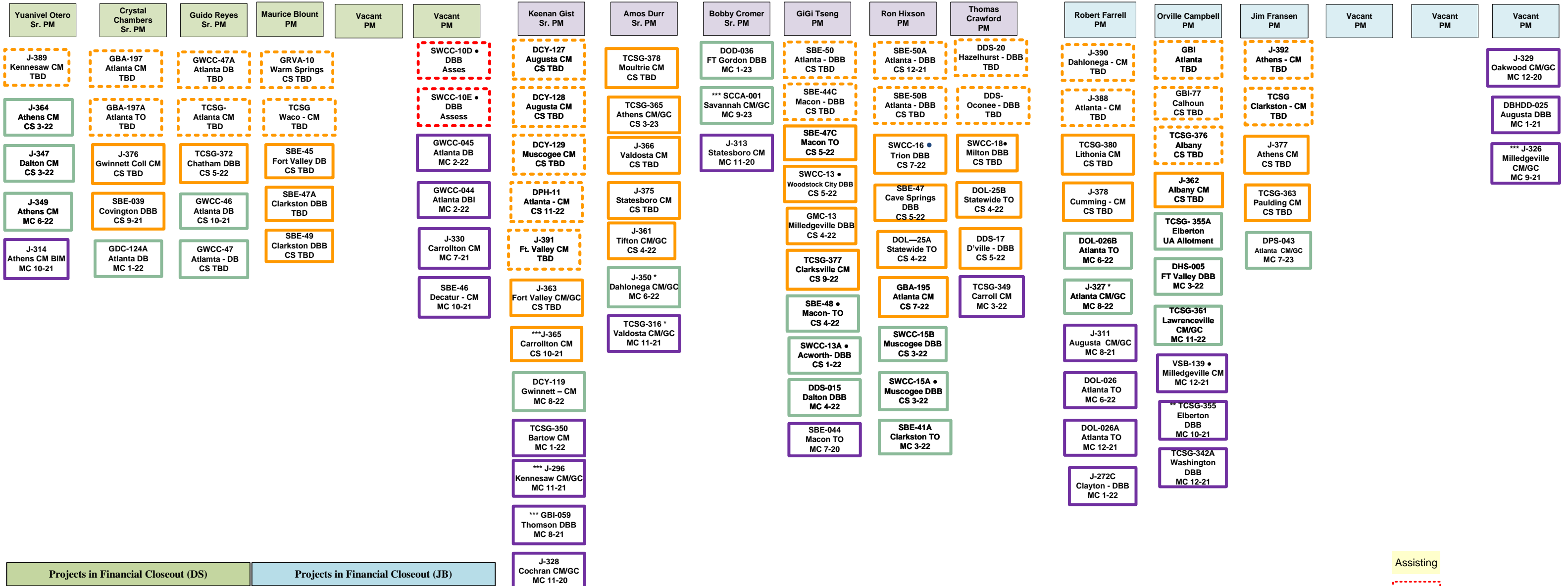
Latest Update 6.6.22

Carmen Cureton
Director of Construction Services

Demauro Starks
Project Executive

Daniela Arsic
Project Executive

James Brownsmith
Project Executive



Projects in Financial Closeout (DS)	Projects in Financial Closeout (JB)
SWCC-11 (KF)	TCSG-314; TCSG-318 (JB)
Projects in Financial Closeout (DA)	Projects on Hold
GAE-020(BC); TCSG-335 (GT); SWCC-10 (GT); TCSG-345 (AD); SBE-25A; GMC-11 (BC); SBE-44A (GT); SBE-44B (GT); TCSG-265 (AD); TCSG-351; SBE-41 (GT); J-235A (KG); DOT-102 (AD); SBE-44 (GT)	TCSG-369; TCSG-Effingham

Assisting

- SWCC Assessments
- 1 Project in Planning
- 2 Project in Design
- 3 Project in Construction
- 4 Project in Punchlist
- 5 Project on hold
- BIM

Ronnie Childers RQAM North
Van Taylor CCS
Patrick Couch CCS
Bryan Cox CCS
Bill Peters CCS
Larry Krull CCS

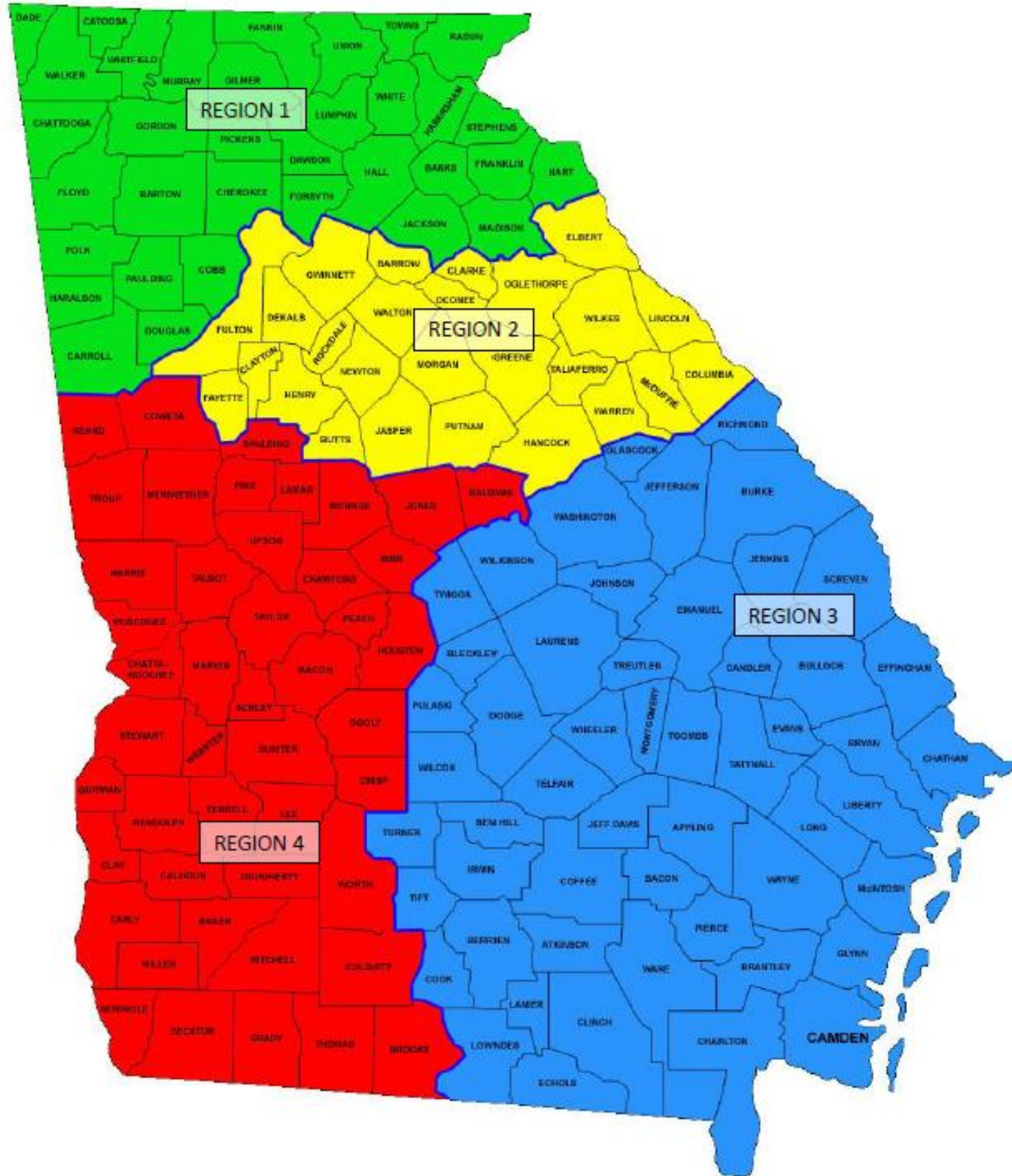
Marc Meeks RQAM South East
Jeff Bleam Sr. CCS
Gary Brooks CCS
Logen Cammack, CCS

Stephen Williamson RQAM Metro
Peter Groves Sr. CCS
Greg Hardin CCS
Russell Neal CCS
Tom Ray CCS
Roy Peurifoy CCS
Torrence Terry CCS
Tim White CCS
Michael Wilson CCS

Eddie Harris RQAM South West
Chris Bell Sr. CCS
Chris Cowell Sr. CCS
Everett Vickery CCS
Darrel Whitworth Sr. CCS
Martin Mathis CCS

- Federal Funds
- DB** – Design, Build
- DBB** – Design, Bid, Build
- CM** – Construction Management
- SB** – Select Bid
- CS** – Construction Start Date
- MC** - Material Completion Date
- TBD**- To Be Determined
- S**- Special Projects
- TO** – Task Order

2022 GSFIC Regional Quality Assurance Manager and Construction Compliance Specialist Contact List



REGION 1: NORTH

- RQAM:** RONNIE CHILDERS
ronald.childers@gsfic.ga.gov
404-717-0243
- CCS:** PATRICK COUCH (Sr. CCS)
patrick.couch@gsfic.ga.gov
678-616-4175
- BRYAN COX (Sr. CCS)
bryan.cox@gsfic.ga.gov
678-255-5645
- LARRY KRUL (Sr. CCS)
lawrence.krul@gsfic.ga.gov
404-357-8519
- BILL PETERS
william.peters@gsfic.ga.gov
470-990-3322
- VAN TAYLOR
van.taylor@gsfic.ga.gov
404-427-9425

REGION 2: METRO CONT'D

- CCS:** TIM WHITE
tim.white@gsfic.ga.gov
404-655-1651
- MICHAEL WILSON
michael.wilson@gsfic.ga.gov
404-839-1920

REGION 3: SOUTHEAST

- RQAM:** MARC MEEKS
marc.meeks@gsfic.ga.gov
770-550-9842
- CCS:** JEFF BLEAM (Sr. CCS)
jeffrey.bleam@gsfic.ga.gov
770-550-3689
- GARY BROOKS
gary.brooks@gsfic.ga.gov
404-717-1884
- LOGEN CAMMACK
logen.cammack@gsfic.ga.gov
(404) 989-2158

REGION 2: METRO

- RQAM:** STEPHEN WILLIAMSON
stephen.williamson@gsfic.ga.gov
404-717-0266
- CCS:** TINSLEY BAILEY (Sr. CCS) PT
tinsley.bailey@gsfic.ga.gov
???-???-????
- PETER GROVES (Sr. CCS)
peter.groves@gsfic.ga.gov
770-550-1679
- GREG HARDIN
greg.hardin@gsfic.ga.gov
678-674-9383
- RUSSELL NEAL
russell.neal@gsfic.ga.gov
404-548-7125
- ROY PEURIFOY
roy.peurifoy@gsfic.ga.gov
404-218-7283
- TOM RAY
tom.ray@gsfic.ga.gov
404-313-8245
- TORRANCE TERRY
torrance.terry@gsfic.ga.gov
678-554-9319

REGION 4: SOUTHWEST

- RQAM:** EDDIE HARRIS
eddie.harris@gsfic.ga.gov
770-550-3728
- CCS:** CHRIS BELL (Sr. CCS)
james.bell@gsfic.ga.gov
770-550-7962
- CHRIS COWELL - (Sr. CCS)
christopher.cowell@gsfic.ga.gov
404-717-0263
- MARTIN MATHIS
martin.mathis@gsfic.ga.gov
470-754-5154
- DARREL WHITWORTH (Sr. CCS)
darrel.whitworth@gsfic.ga.gov
404-717-0249

QUALITY ASSURANCE MANAGER

- JASON PARKER
jason.parker@gsfic.ga.gov
404-606-4027