

# Construction Services Projects by Project Managers JANUARY 2025

Latest Update 1-6-2025

**Daniela Arsic**  
Project Director

**Demauro Starks**  
Project Director

**Amos Durr**  
Project Executive

**Jim Fransen**  
Project Executive

**Bobby Cromer**  
Project Executive

**Vacant**  
Project Executive

Chesleigh Charles PM	Katie Downey PM	GiGi Tseng PM	David Adeegbe PM	Stephanie Farley APM	Todd Williams PM
DOT-133 GA CS TBD	TCSG-402 Vidalia DBB	TCSG-413 Walton Co-CM CS 11-25	GVRA-13 Warm Spgs Assmnt	SWCC-18 Milton DBB CS TBD	DBHDD-038A Augusta-DBB CS 1-25
DBHDD-38K Columbus-DBB CS TBD	J-410 Columbus CM CS 12-24	J-407 Baldwin - CM CS 6-25	GVRA-12 Warm Spgs-DBB CS 11-24	TCSG-318A NORTHW.TEC CS TBD	J-406 Glynn - CM CS 1-25
DOT-134 GA CS TBD	DOT-131 Atlanta -DBB MC 12-24	J-408 Eastman -CM CS 1-25	SWCC-13 Woodstk City DBB CS TBD	SWCC-16 Trion DBB CS TBD	DDS-19 Rome - DB CS 2-25
DOT-132 GA CS 8-25	DOT-130 Thmaston -DBB MC 10-24	TCSG-390 Clarksvill - DBB MC 5-25	TCSG-361A Gwinnett CS 10-24	SBE-50B Cve Spgs - MC 8-24	TCSG-372 Chatham DBB MC 12-24
J-392 Athens-CM MC 10-25		TCSG-377 Clarksville CM MC 12-25	TCSG-393 Clktn/Newt - DBB MC 1-25	SBE-50C Clarkston- MC-8-24	TCSG-399 Pooler CS MC 2-25
		TCSG-365 Athens CM/GC MC 11-23	TCSG-361 Lawrenceville CM/GC MC 12-22		J-375 Statesboro CM MC 10-24
		GMC-16 Milledgeville CM MC 2-24			
		GMC-13 Milledgeville DBB MC 8-23			

Vacant PM	Michael Bester PM	Beniquez Jones Sr PM	Crystal Chambers Sr. PM	Michael Wilson PM	Larry Reid PM
	DBHDD-038B Atlanta-DBB CS TBD	J-425 UNG- CM CS 10-25	J-439 ROME-CM CS 10-25	TCSG-415 Macon DBB	TCSG-359C EFFINGHGN CM
	DBHDD-038I Milledgeville-DBB CS TBD	J-434 Clayton-CM CS 10-25	J-348 Atlanta - CM CS 6-25	SBE-52 Clkstn - DBB CS 1-25	TCSG-423 Fitzgerald-DBB CS 2-25
J-389 Kennesaw CM MC 10-25	J-403 Dahlonega CS 2-25	TCSG-378 Moultrie CM MC 8-25	SBE-51 Ft Valley - DBB CS 1-25	DBHDD-038C NORTHV-DBB CS TBD	DBHDD-038H MILLEDGEVILLE CS TBD
	TCSG-400 Bulloch -Cm/CS 2-25	J-366 Valdosta CM MC 3-26	TCSG-404 Oconee - CM CS 1-25	DBHDD-038G Millegvill-DBB CS TBD	J-405 Albany CM/GC CS 1-25
	TCSG-375 Atlanta DBB CS 12-24	J-376 Gwnnt. Coll CM MC 2-25	SBE-53 Fort Valley-DBB CS 10-24	DBHDD-038J COLUMBUS-DBB CS TBD	J-391 Ft. Valley CM MC 9-25
	J-390 Blue Rdg- CM MC 3-25	SBE-039 Cvnngton DBB MC 12-25	GWCC-47 Atlanta - DB MC 9-24	GVRA-10A WarmSpgs-CM CS 2-25	DPH-11 Atlanta - CM MC 2-25
	TCSG-398 Ellabel- CM MC 8-25	J-388 Atlanta - CM CS 3-26	GWCC-47A Atlanta DB MC 1-25	J-395 Augusta - CM MC 5-25	TCSG-376 Albany MC 12-24
	J-378 Cumming - CM MC 7-24		DPS-043 Atlanta CM/GC MC 12-23	TCSG-380 Decatur- DBB MC 7-25	TCSG-392 Waco - CS MC 5-25
			SBE-47A Clarkston DBB MC1-24		SBE-50 Macon - CS MC 2-25
					GBI-77 Calhoun MC 1-25
					DDS-17 D'ville - DBB MC 8-24
					VSB-146 Millville - DBB MC 10-24
					TCSG-367A Albany DBB MC 8-24

Eric Underwood PM	Keenan Gist Sr. PM	Bobby II Sibbles PM	Thomas Crawford PM	Dwayne Stephens Sr. PM	Vacant PM
DBHDD-038D Augusta CS TBD	GAE-025 Perry CS 5-25	J-440 Lawrenceville CM	GBI-88 Macon CM	J-419 Ga.Sothern CS TBD	
DBHDD-038E GRACEWOOD CS TBD	J-429 Athens-CM CS 10-25	DDS-21 Oconee -DB	J-409 C'ton -CM CS 3-25	J-437 SAVANNAH DB	
DBHDD-038H MILLEDGEVILLE CS TBD	J-420 Athens -CM CS 5-25	DBHDD-35 Atlanta -CM CS TBA	SBE-44C Macon-CM/GC CS 1-25	DBHDD-38 Savannah-DBB CS TBD	
J-405 Albany CM/GC CS 1-25	J-391 Ft. Valley CM MC 9-25	TCSG-369 McDon CM MC 9-24	GBI-81 Atlanta CM CS 4-25	J-399 Savannah - CM CS 11-24	
	DPH-11 Atlanta - CM MC 2-25	TCSG-376 Albany MC 12-24	TCSG-392 Waco - CS MC 5-25	*** SCCA-001 Savannah CM/GC MC 9-23	
	J-363 Fort Valley CM/GC MC 9-25	DDS-20 Hzlhrst - DBB MC 5-25	SBE-50 Macon - CS MC 2-25	DOD-036 FT Gordon DBB MC 3-23	
	***J-365 Carrollton CM MC 8-24	J-347 Dalton CM MC 7-23	GBI-77 Calhoun MC 1-25		
	DCY-119 Gwinnett - CM MC 8-22	DOL-27 ATL - TO MC 7-24			
		VSB-146 Millville - DBB MC 10-24			
		TCSG-367A Albany DBB MC 8-24			

Projects in Financial Closeout (BC)	Projects in Financial Closeout ( )	Upcoming Projects
GWCC-45 (DS); J-330 (DS); TCSG-349(TC); GWCC-44; J-314; TCSG-342A; J-364(YO) J-314(YO);SBE-50A(YO);GBI-59(KG); TCSG-351; J-326 (TC);J-329 (TC) TCSG-355(OC);TCSG-316;DCY-128(KG)		
Projects in Financial Closeout (JF)	Projects in Financial Closeout (AD)	Projects on Hold
DOL-26 (MB);GDC-124A(CC);J-327(MW); J-361(MW);GWCC-46(MW);TCSG-363(JF)	TCSG-265; TCSG-350; GWCC-046 ;SWCC-15A/B; SWCC-21A; J-350(GG);SBE-47(AD);SWCC-15A(SF);SWCC-15B(SF)(TCSG-361AL.VILLE)	LLIDA-1 (JF); LLIDA-1A (JF); TCSG-383 (CC); GAE-25 (RF) ;TCSG-397(TBD)

- Federal Funds
- DB – Design, Build
- DBB – Design, Bid, Build
- CM – Construction Management
- SB – Select Bid
- CS – Construction Start Date
- MC- Material Completion Date
- TBD- To Be Determined
- S- Special Projects
- TO – Task Order

- Assisting
- SWCC Assessments
- 1 Project in Planning
- 2 Project in Design
- 3 Project in Construction
- 4 Project in Punchlist
- 5 Project on hold
- BIM

# Construction Services

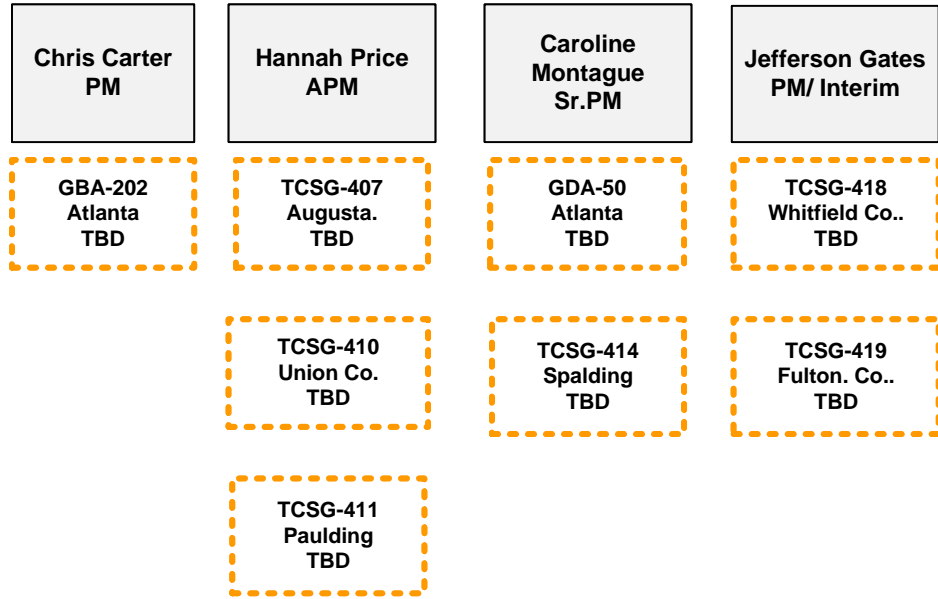
## Projects by Program Managers

### JANUARY 2025

- Federal Funds
  - DB – Design, Build
  - DBB – Design, Bid, Build
  - CM – Construction Management
  - SB – Select Bid
  - CS – Construction Start Date
  - MC- Material Completion Date
  - TBD- To Be Determined
  - S- Special Projects
  - TO – Task Order
- 
- Assisting
  - SWCC
  - 1 Project in Planning
  - 2 Project in Design
  - 3 Project in Construction
  - 4 Project in Punchlist
  - 5 Project on hold
  - BIM

**TTH**

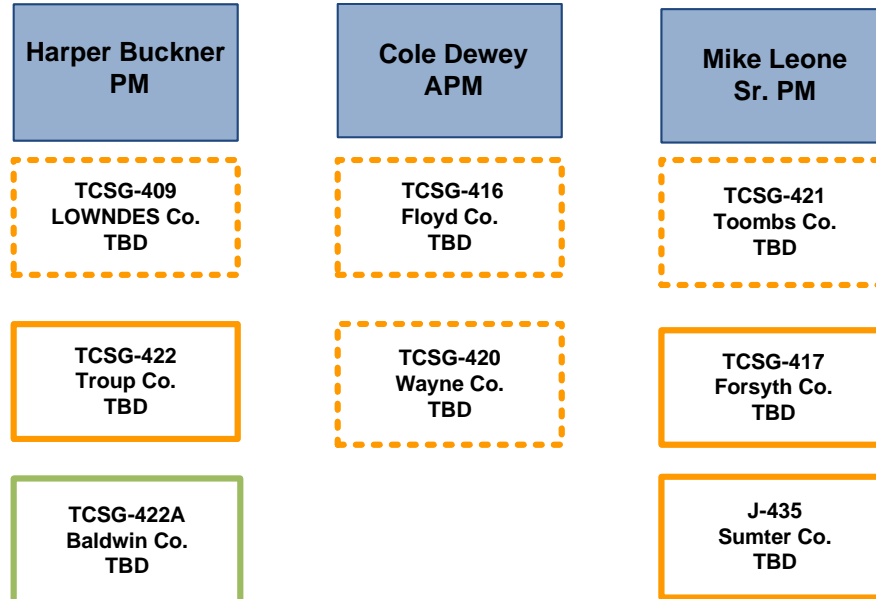
**Kelly Brown  
PE/Director**



**JLL**

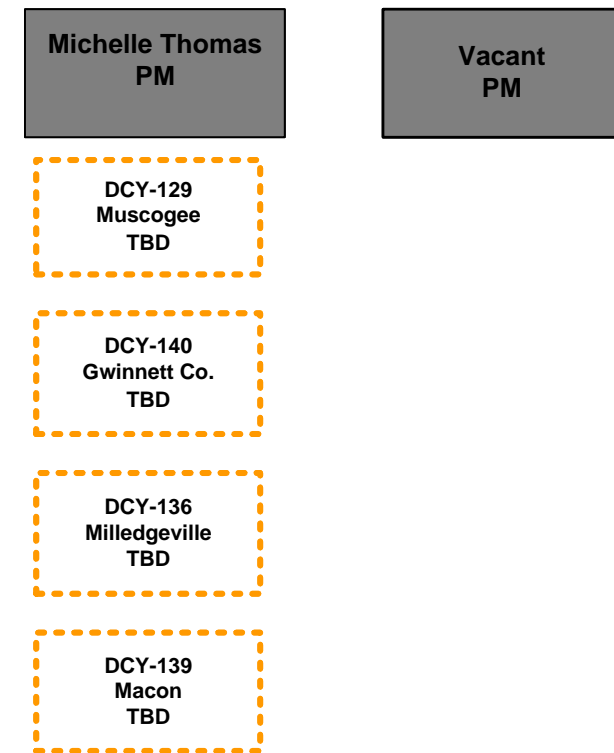
**Russel Rankenburg  
- PE/Director**

**Sylvia Kline - PE  
Director**

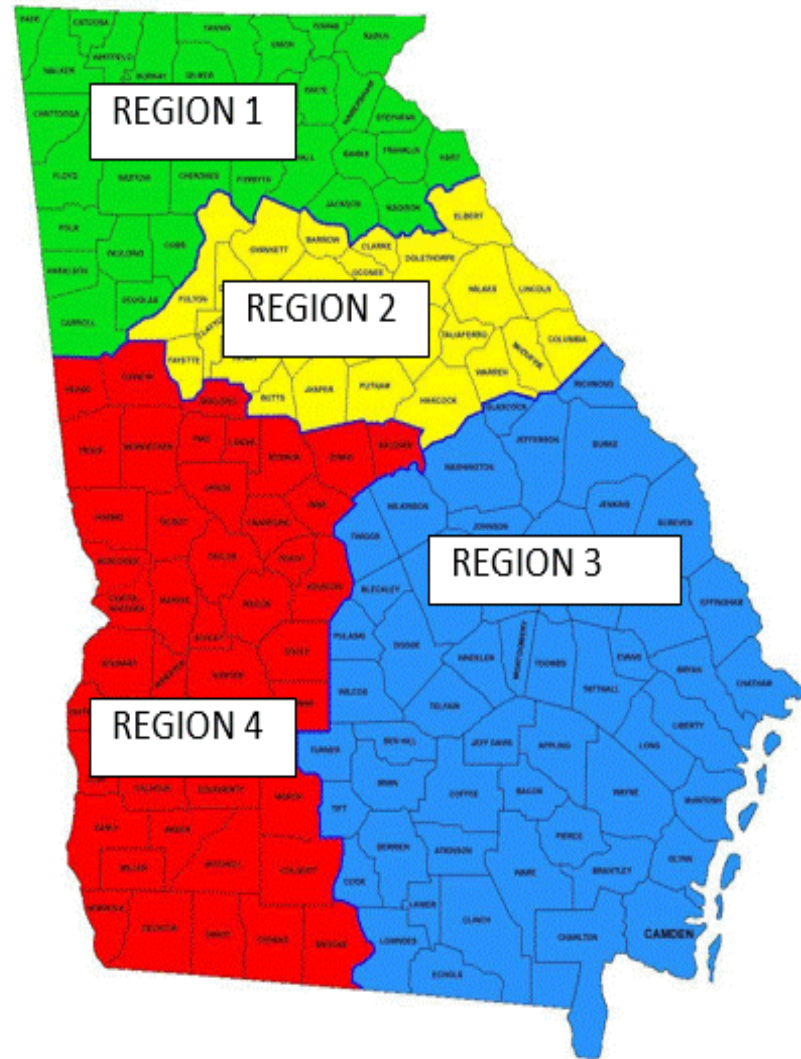


**GLEEDS**

**Suzan Talley  
PE**



Projects in Financial Closeout (TTH)	Projects in Financial Closeout (JLL)	Projects in Financial Closeout (GLEEDS)
Projects on Hold		



**DEPUTY EXECUTIVE DIRECTOR:  
GIFTON PASSLEY**

# 2025 GSFIC REGIONAL QUALITY ASSURANCE MANAGER AND CONSTRUCTION COMPLIANCE SPECIALIST CONTACT LIST

## SAVANNAH

**QAM:** JEFF BLEAM  
[jeffrey.bleam@gsfic.ga.gov](mailto:jeffrey.bleam@gsfic.ga.gov)  
770.550.3689

## REGION 1: NORTH

**RQAM:** BRYAN COX  
[bryan.cox@gsfic.ga.gov](mailto:bryan.cox@gsfic.ga.gov)  
678.255.5645

**CCS:** PATRICK COUCH  
[patrick.couch@gsfic.ga.gov](mailto:patrick.couch@gsfic.ga.gov)  
678.816.4175

BILL PETERS (SR.CCS)  
[william.peters@gsfic.ga.gov](mailto:william.peters@gsfic.ga.gov)  
404.357.8519

VAN TAYLOR  
[van.taylor@gsfic.ga.gov](mailto:van.taylor@gsfic.ga.gov)  
404.427.9425

DUSTIN O'HARA  
[dustin.o'hara@gsfic.ga.gov](mailto:dustin.o'hara@gsfic.ga.gov)  
404.539.1449

JAMES WILLIAMS  
[clay.williams@gsfic.ga.gov](mailto:clay.williams@gsfic.ga.gov)  
404.824.0083

JASON HOUSTON  
[jason.houston@gsfic.ga.gov](mailto:jason.houston@gsfic.ga.gov)  
404.403.0301

## REGION 2: METRO

**RQAM:** STEPHEN WILLIAMSON  
[stephen.williamson@gsfic.ga.gov](mailto:stephen.williamson@gsfic.ga.gov)  
404.717.0243

**CCS:** GREG HARDIN (Sr.CCS)  
[greg.hardin@gsfic.ga.gov](mailto:greg.hardin@gsfic.ga.gov)  
678.674.9383

RUSSELL NEAL (Sr. CCS)  
[russell.neal@gsfic.ga.gov](mailto:russell.neal@gsfic.ga.gov)  
404.548.7125

COLLIN HENRY  
[collin.henry@gsfic.ga.gov](mailto:collin.henry@gsfic.ga.gov)  
404.376.6252

TOM RAY  
[tom.ray@gsfic.ga.gov](mailto:tom.ray@gsfic.ga.gov)  
404.313.8245

SHAWN SIMMIONS  
[shawn.simmons@gsfic.ga.gov](mailto:shawn.simmons@gsfic.ga.gov)  
404.907.5003

TIM WHITE  
[tim.white@gsfic.ga.gov](mailto:tim.white@gsfic.ga.gov)  
404.655.1651

CLIVE YOUNG  
[clive.young@gsfic.ga.gov](mailto:clive.young@gsfic.ga.gov)  
470.604.3931

## REGION 3: SOUTHEAST

**RQAM:** MARC MEEKS  
[marc.meeks@gsfic.ga.gov](mailto:marc.meeks@gsfic.ga.gov)  
770.550.9842

**CCS:** NATHAN BRITT  
[Nathan.britt@gsfic.ga.gov](mailto:Nathan.britt@gsfic.ga.gov)  
404.219.5826

GREGORY FUTCH (Sr. CCS)  
[gregory.futch@gsfic.ga.gov](mailto:gregory.futch@gsfic.ga.gov)  
404.219.1524

LOGEN CAMMACK  
[logen.cammack@gsfic.ga.gov](mailto:logen.cammack@gsfic.ga.gov)  
404.989.2158

JUSTICE ROWE  
[justice.rowe@gsfic.ga.gov](mailto:justice.rowe@gsfic.ga.gov)

## REGION 4: SOUTHWEST

**RQAM:** EDDIE HARRIS  
[eddie.harris@gsfic.ga.gov](mailto:eddie.harris@gsfic.ga.gov)  
770.550.3728

**CCS:** MARTIN MATHIS (Sr. CCS)  
[martin.mathis@gsfic.ga.gov](mailto:martin.mathis@gsfic.ga.gov)  
470.754.5154

CHRIS COWELL (Sr. CCS)  
[christopher.cowell@gsfic.ga.gov](mailto:christopher.cowell@gsfic.ga.gov)  
404.717.0263

DARREL WHITWORTH (Sr. CCS)  
[darrel.whitworth@gsfic.ga.gov](mailto:darrel.whitworth@gsfic.ga.gov)  
404.717.0249