

Construction Services Projects by Project Managers FEBRUARY 2025

Latest Update 2-5-2025

Daniela Arsic
Project Director

Demauro Starks
Project Director

Amos Durr
Project Executive

Jim Fransen
Project Executive

Bobby Cromer
Project Executive

Vacant
Project Executive

Amos Durr Projects:

- Chesleigh Charles PM: DOT-133 GA CS TBD
- Katie Downey PM: TCSG-402 Vidalia DBB
- GiGi Tseng Sr.PM: TCSG-413 Walton Co-CM CS 12-25
- David Adeegbe PM: GVRA-13 Warm Spgs Assmnt
- Stephanie Farley APM: SWCC-18• Milton DBB CS TBD
- Todd Williams PM: DBHDD-038A Augusta-DBB CS 1-25
- DBHDD-38K Columbus-DBB CS TBD
- J-410 Columbus CM MC 1-26
- J-407 Baldwin - CM CS 7-25
- GVRA-12 Warm Spgs-DBB CS 2-25
- TCSG-318A NORTHW.TEC CS TBD
- J-406 Glynn - CM CS 1-25
- DOT-134 GA CS TBD
- DOT-131 Atlanta -DBB MC 10-25
- J-408 Eastman -CM CS 1-25
- SWCC-13 • Woodstk City DBB CS TBD
- SWCC-16• Trion DBB CS TBD
- DDS-19 Rome - DB CS 2-25
- DOT-132 GA CS 8-25
- DOT-130 Thmaston -DBB MC 7-25
- TCSG-390 Clarksvill - DBB MC 5-25
- TCSG-361A Gwinnett CS 10-24
- SBE-50B Cve Spgs - MC 8-24
- TCSG-372 Chatham DBB MC 12-24
- J-392 Athens-CM MC 12-25
- TCSG-377 Clarksville CM MC 12-25
- TCSG-393 Clktn/Newt - DBB MC 2-25
- SBE-50C Clarkston- MC-8-24
- TCSG-399 Pooler CS MC 2-25
- TCSG-365 Athens CM/GC MC 11-23
- TCSG-361 Lawrenceville CM/GC MC 12-22
- J-375 Statesboro CM MC 10-24
- GMC-16 Milledgeville CM MC 2-24
- GMC-13 Milledgeville DBB MC 8-23

Jim Fransen Projects:

- Vacant PM
- Michael Bester PM: DBHDD-038B Atlanta-DBB CS TBD
- Beniquez Jones Sr PM: J-425 UNG- CM CS 10-25
- Crystal Chambers Sr. PM: J-439 ROME-CM CS 10-25
- Michael Wilson PM: TCSG-415 Macon DBB
- Larry Reid PM: TCSG-359C EFFINGHGN CM
- DBHDD-038I Milledgeville-DBB MC 4-25
- J-434 Clayton-CM CS 10-25
- J-348 Atlanta - CM CS 9-25
- SBE-52 Clkstn - DBB CS 1-25
- TCSG-423 Fitzgerald-DBB CS 2-25
- J-389 Kennesaw CM MC 10-25
- J-403 Dahlonaga CM/CS 3-25
- TCSG-378 Moultrie CM MC 8-25
- SBE-51 Ft Valley - DBB MC 10-25
- DBHDD-038C NORTHV-DBB CS TBD
- TCSG-400 Bulloch CM/CS 4-25
- J-366 Valdosta CM MC 3-26
- TCSG-404 Oconee - CM MC 3-26
- DBHDD-038J Millegvill-DBB CS TBD
- TCSG-375 Atlanta DBB CS 5-25
- J-388 Atlanta - CM MC 3-26
- SBE-53 Fort Valley-DBB MC 2-25
- J-390 Blue Rdg- CM MC 3-25
- J-376 Gwnnt. Coll-CM MC 12-24
- GWCC-47 Atlanta - DB MC 9-24
- GVRA-10A WarmSpgs-CM CS 2-25
- TCSG-398 Ellabel- CM MC 7-25
- SBE-039 Cvnngton DBB MC 1-25
- GWCC-47A Atlanta DB MC 1-25
- J-395 Augusta - CM MC 5-25
- J-378 Cumming - CM MC 7-24
- DPS-043 Atlanta CM/GC MC 12-23
- SBE-47A Clarkston DBB MC1-24
- TCSG-380 Decatur- DBB MC 7-25

Bobby Cromer Projects:

- Eric Underwood PM: DBHDD-038D Augusta CS TBD
- Keenan Gist Sr. PM: GAE-025 Perry CS 5-25
- Bobby II Sibbles PM: J-440 Lawrenceville CM
- Thomas Crawford PM: GBI-88 Macon CM
- Dwayne Stephens Sr. PM: J-419 Ga.Sothern CS TBD
- DBHDD-038E GRACEWOOD CS TBD
- J-429 Athens-CM CS 10-25
- DDS-21 Oconee -DB
- J-409 C'ton -CM CS 6-25
- J-437 SAVANNAH DB
- DBHDD-038H MILLEDGEVILLE CS TBD
- J-420 Athens -CM CS 5-25
- DBHDD-35 Atlanta -CM CS TBA
- SBE-44C Macon-CM/GC CS 4-25
- DBHDD-38 Savannah-DBB CS TBD
- J-405 Albany CM/GC MC 1-26
- J-391 Ft. Valley CM MC 2-26
- TCSG-369 McDon CM MC 3-25
- GBI-81 Atlanta CM CS 6-25
- J-399 Savannah - CM CS 11-24
- DPH-11 Atlanta - CM MC 3-25
- TCSG-376 Albany MC 2-25
- TCSG-392 Waco - CS MC 5-26
- *** SCCA-001 Savannah CM/GC MC 9-23
- J-363 Fort Valley CM/GC MC 9-25
- DDS-20 Hzlhrst - DBB MC 5-25
- SBE-50 Macon - CS MC 2-25
- DOD-036 FT Gordon DBB MC 3-23
- ***J-365 Carrollton CM MC 8-24
- J-347 Dalton CM MC 7-23
- GBI-77 Calhoun MC 2-25
- DCY-119 Gwinnett-CM MC 8-22
- DOL-27 ATL - TO MC 7-24
- DDS-17 D'ville - DBB MC 8-24
- VSB-146 • Millville - DBB MC 10-24
- TCSG-367A Albany DBB MC 8-24

Vacant PM

Projects in Financial Closeout (BC)	Projects in Financial Closeout ()	Upcoming Projects
GWCC-45 (DS); J-330 (DS); TCSG-349(TC); GWCC-44; J-314; TCSG-342A; J-364(YO) J-314(YO)SBE-50A(YO);GBI-59(KG); TCSG-351; J-326 (TC);J-329 (TC) TCSG-355(OC);TCSG-316;DCY-128(KG)		
Projects in Financial Closeout (JF)	Projects in Financial Closeout (AD)	Projects on Hold
DOL-26 (MB);GDC-124A(CC);J-327(MW); J-361(MW);GWCC-46(MW);TCSG-363(JF);J-376(CC) SBE-039(CC);	TCSG-265; TCSG-350; GWCC-046 ;SWCC-15A/B; SWCC-21A; J-350(GG);SBE-47(AD);SWCC-15A(SF);SWCC-15B(SF)(TCSG-361AL.VILLE)	LLIDA-1 (JF); LLIDA-1A (JF); TCSG-383 (CC); GAE-25 (RF) ;TCSG-397(TBD)

- Federal Funds
- DB – Design, Build
- DBB – Design, Bid, Build
- CM – Construction Management
- SB – Select Bid
- CS – Construction Start Date
- MC - Material Completion Date
- TBD- To Be Determined
- S- Special Projects
- TO – Task Order

- Assisting
- SWCC Assessments
- 1 Project in Planning
- 2 Project in Design
- 3 Project in Construction
- 4 Project in Punchlist
- 5 Project on hold
- BIM

Construction Services

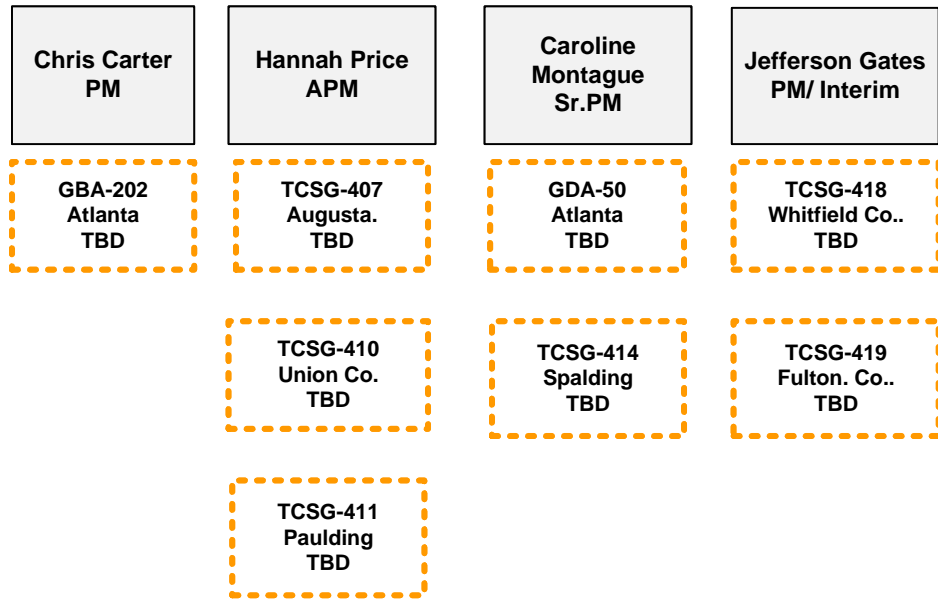
Projects by Program Managers

FEBRUARY 2025

- Federal Funds
 - DB – Design, Build
 - DBB – Design, Bid, Build
 - CM – Construction Management
 - SB – Select Bid
 - CS – Construction Start Date
 - MC- Material Completion Date
 - TBD- To Be Determined
 - S- Special Projects
 - TO – Task Order
- Assisting
 - SWCC
 - 1 Project in Planning
 - 2 Project in Design
 - 3 Project in Construction
 - 4 Project in Punchlist
 - 5 Project on hold
 - BIM

TTH

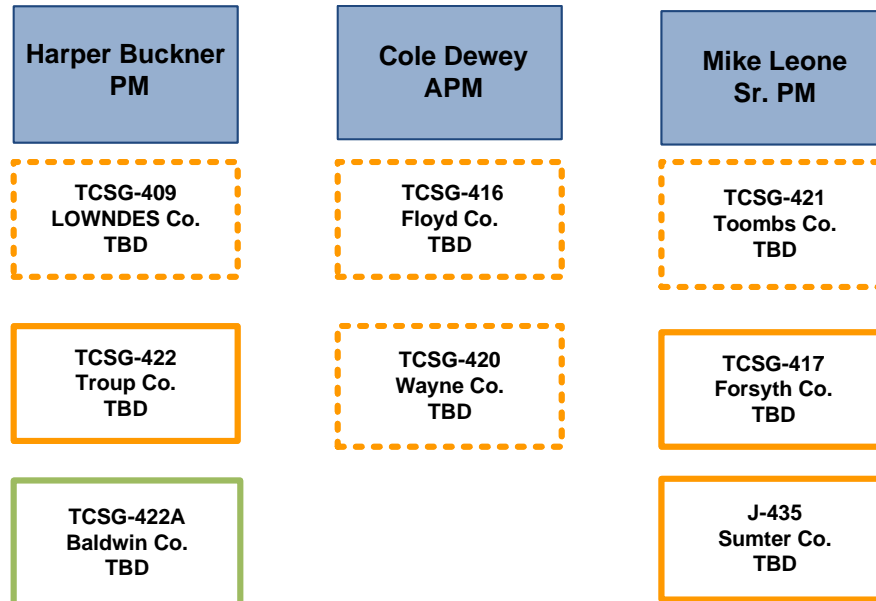
**Kelly Brown
PE/Director**



JLL

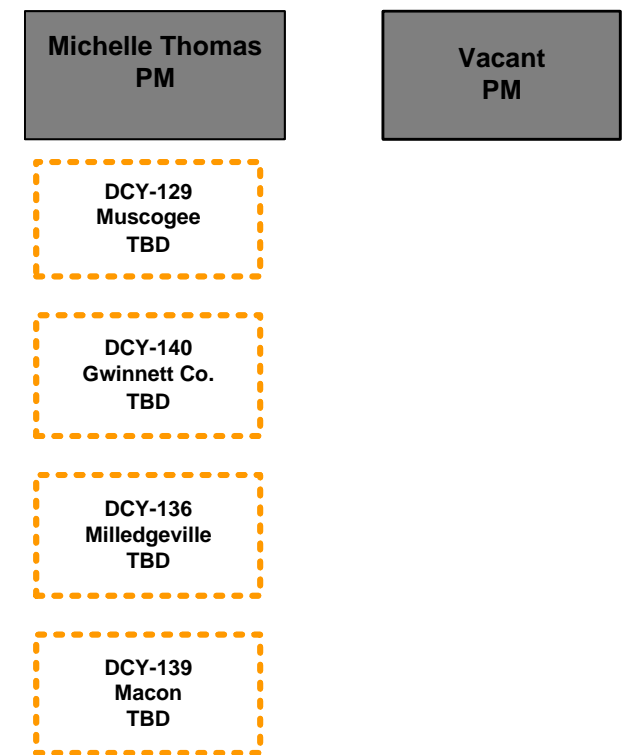
**Russel Rankenburg
- PE/Director**

**Sylvia Kline - PE
Director**



GLEEDS

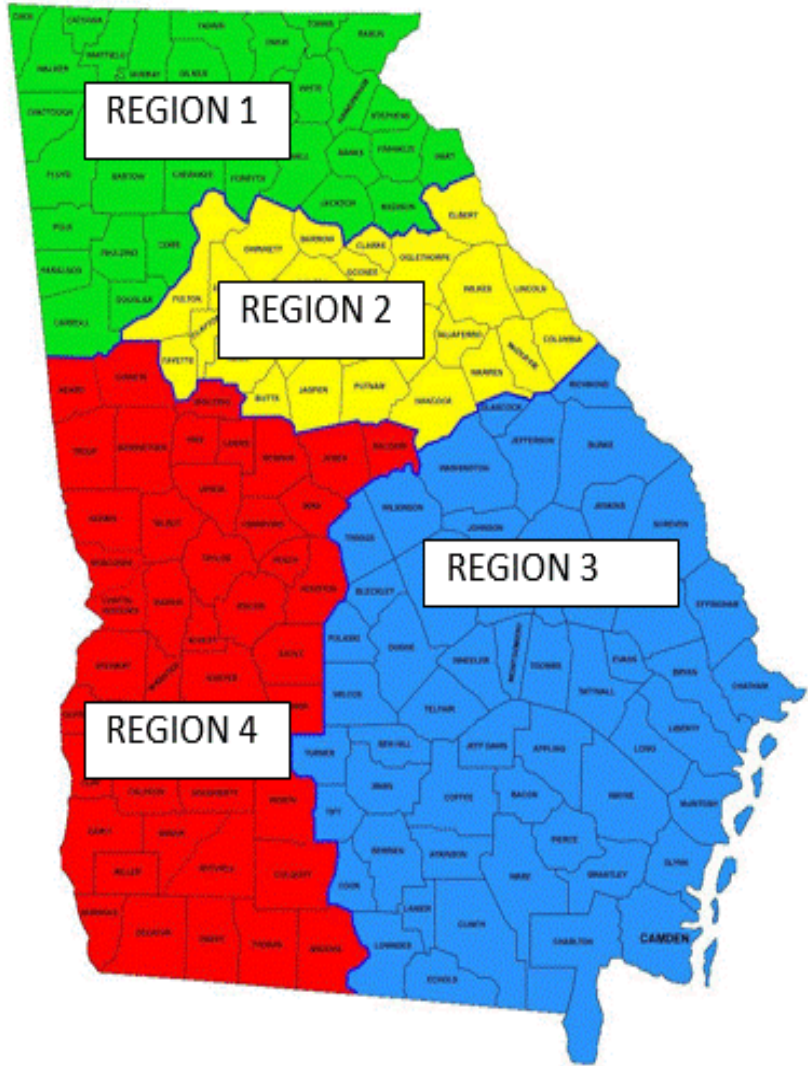
**Suzan Talley
PE**



Projects in Financial Closeout (TTH)	Projects in Financial Closeout (JLL)	Projects in Financial Closeout (GLEEDS)
Projects on Hold		



2025 GSFIC REGIONAL QUALITY ASSURANCE MANAGER AND CONSTRUCTION COMPLIANCE SPECIALIST CONTACT LIST



**DEPUTY EXECUTIVE DIRECTOR:
GIFTON PASSLEY**

SAVANNAH

QAM: JEFF BLEAM
jeffrey.bleam@gsfic.ga.gov
 770.550.3689

REGION 1: NORTH

RQAM: BRYAN COX
bryan.cox@gsfic.ga.gov
 678.255.5645

CCS: PATRICK COUCH
patrick.couch@gsfic.ga.gov
 678.816.4175

BILL PETERS (SR.CCS)
william.peters@gsfic.ga.gov
 404.357.8519

VAN TAYLOR
van.taylor@gsfic.ga.gov
 404.427.9425

DUSTIN O'HARA
dustin.o'hara@gsfic.ga.gov
 404.539.1449

JAMES WILLIAMS
clay.williams@gsfic.ga.gov
 404.824.0083

JASON HOUSTON
jason.houston@gsfic.ga.gov
 404.403.0301

DARRISE YOUNG
darrise.young@gsfic.ga.gov

REGION 2: METRO

RQAM: STEPHEN WILLIAMSON
stephen.williamson@gsfic.ga.gov
 404.717.0243

CCS: GREG HARDIN (Sr.CCS)
greg.hardin@gsfic.ga.gov
 678.674.9383

RUSSELL NEAL (Sr. CCS)
russell.neal@gsfic.ga.gov
 404.548.7125

COLLIN HENRY
collin.henry@gsfic.ga.gov
 404.376.6252

TOM RAY
tom.ray@gsfic.ga.gov
 404.313.8245

SHAWN SIMMIONS
shawn.simmons@gsfic.ga.gov
 404.907.5003

TIM WHITE
tim.white@gsfic.ga.gov
 404.655.1651

CLIVE YOUNG
clive.young@gsfic.ga.gov
 470.604.3931

REGION 3: SOUTHEAST

RQAM: MARC MEEKS
marc.meeks@gsfic.ga.gov
 770.550.9842

CCS: NATHAN BRITT
Nathan.britt@gsfic.ga.gov
 404.219.5826

GREGORY FUTCH (Sr. CCS)
gregory.futch@gsfic.ga.gov
 404.219.1524

LOGEN CAMMACK
logen.cammack@gsfic.ga.gov
 404.989.2158

JUSTICE ROWE
justice.rowe@gsfic.ga.gov

REGION 4: SOUTHWEST

RQAM: EDDIE HARRIS
eddie.harris@gsfic.ga.gov
 770.550.3728

CCS: MARTIN MATHIS (Sr. CCS)
martin.mathis@gsfic.ga.gov
 470.754.5154

CHRIS COWELL (Sr. CCS)
christopher.cowell@gsfic.ga.gov
 404.717.0263

DARREL WHITWORTH (Sr. CCS)
darrel.whitworth@gsfic.ga.gov
 404.717.0249

CHRIS HAMILTON
chris.hamilton@gsfic.ga.gov