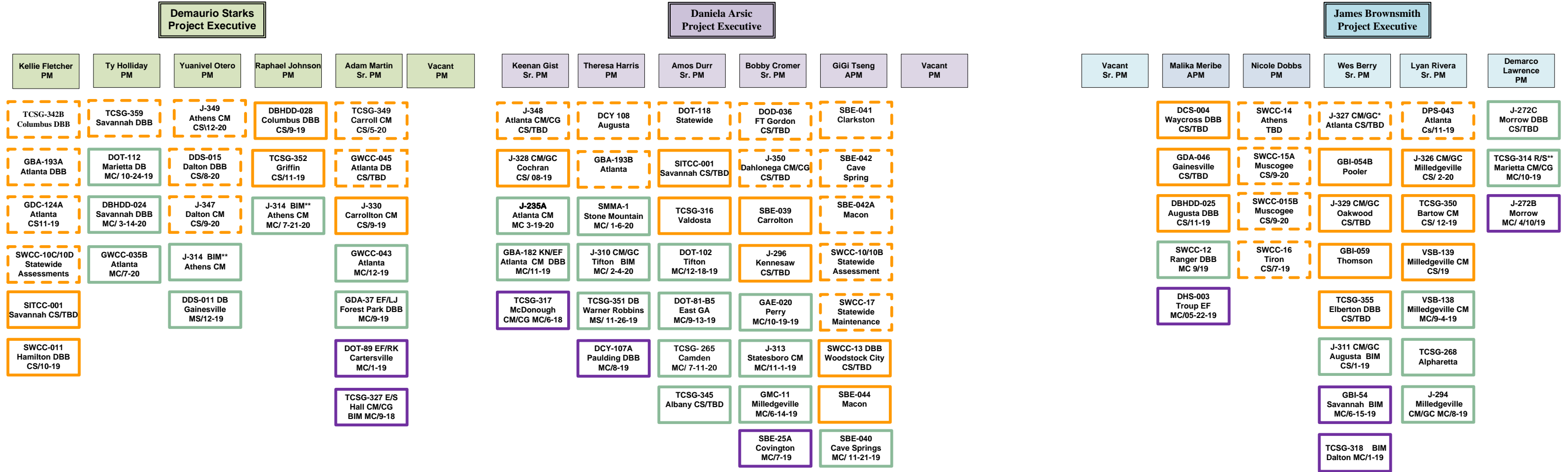
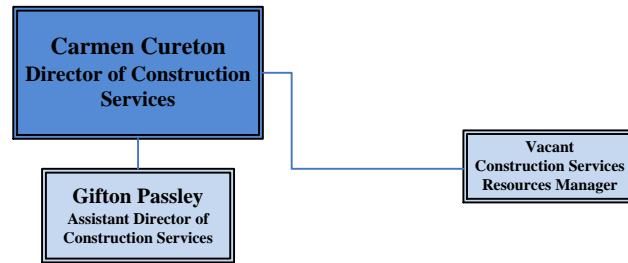


Construction Services

Active Projects by Project Managers

September 2019



GSFIC Contractors
 *Debra Anderson Purcell
 ** Gary McGrath

Projects in Financial Closeout	Projects in Financial Closeout
J-240 (DS) J-242 (TH) SBE-037 (TH) J-290 (YO) TCSG-334 (YO) GBA-184 (RJ) GBA-185 (RJ) J-269 (AM)	GBI-053 (WB) J-295 (WB) J-206 (LR) TCSG-330 (JP) SBE-34 (JP) J-271 (JB) J-299 (JB) J-268 (WB) J-269 (AM)
Projects in Financial Closeout	Projects On Hold
DOT-081-B3 (AD) DOT-81-B2 (AD) TCSG-335 (GT) J-209 (AD) J-267 (BC) SBE-30 (BC) J-266 (BC) GDA-040 (BC) J-235 (GT) DCY-104 (GT) DOT-88 (AD) DOT-81B4 (AD) GBA-190 (TH) DOD-026A (GT) SBE-033A (GT)	TCSG-342A, GBA-188A, GBA -188B, TCSG-316, GBA-188C, DBHDD-19, DHS-004, DHS-005, GWCC-044

- CCS**
- Ronnie Childers RQAM North**
 Van Taylor CCS
 Ron Wilson Sr. CCS
 Lawrence Krul CCS
 Patrick Couch CCS
 Bryan Cox CCS
 Bill Peters CCS
- Stephen Williamson RQAM Metro**
 Tinsley Bailey Sr.CCS
 Peter Groves Sr. CCS
 Greg Hardin CCS
 Elliott Long Sr. CCS
 Russell Neal CCS
 Tom Ray CCS
- Marc Meeks RQAM South East**
 Jeff Bleam Sr. CCS
 Gary Brooks CCS
 Pete Carter CCS
 Stacy Yeomans CCS
- Eddie Harris RQAM South West**
 Chris Bell Sr. CCS
 Frank Carr Sr. CCS
 Chris Cowell Sr. CCS
 Everett Vickery CCS
 Darrel Whitworth Sr. CCS

- Design Review**
- GH - Glenn Haller
 - SA - Steve Abbott
 - EF - Eleanor Furlow
 - GM - Gerard Mastrella
 - LJ - Larry Jennings
 - KN - Ken Nuttall
 - BS - Bistra Spirieva
 - GG - Gerhardt Gerard
 - JS - Jonathon Shaw
- 1** Project in Planning
- 2** Project in Design
- 3** Project in Construction
- 4** Project in Punchlist
- 5** Project on hold
- BIM**
- ARRA Funded Projects
 - RZ Projects
 - Status Change in 30 to 60 Days
 - DB - Design, Build
 - DBB - Design, Bid, Build
 - CM - Construction Management
 - SB - Select Bid
 - CS - Construction Start Date
 - MC- Material Completion Date
 - TBD- To Be Determine
 - S- Special Projects
 - TO - Task Order

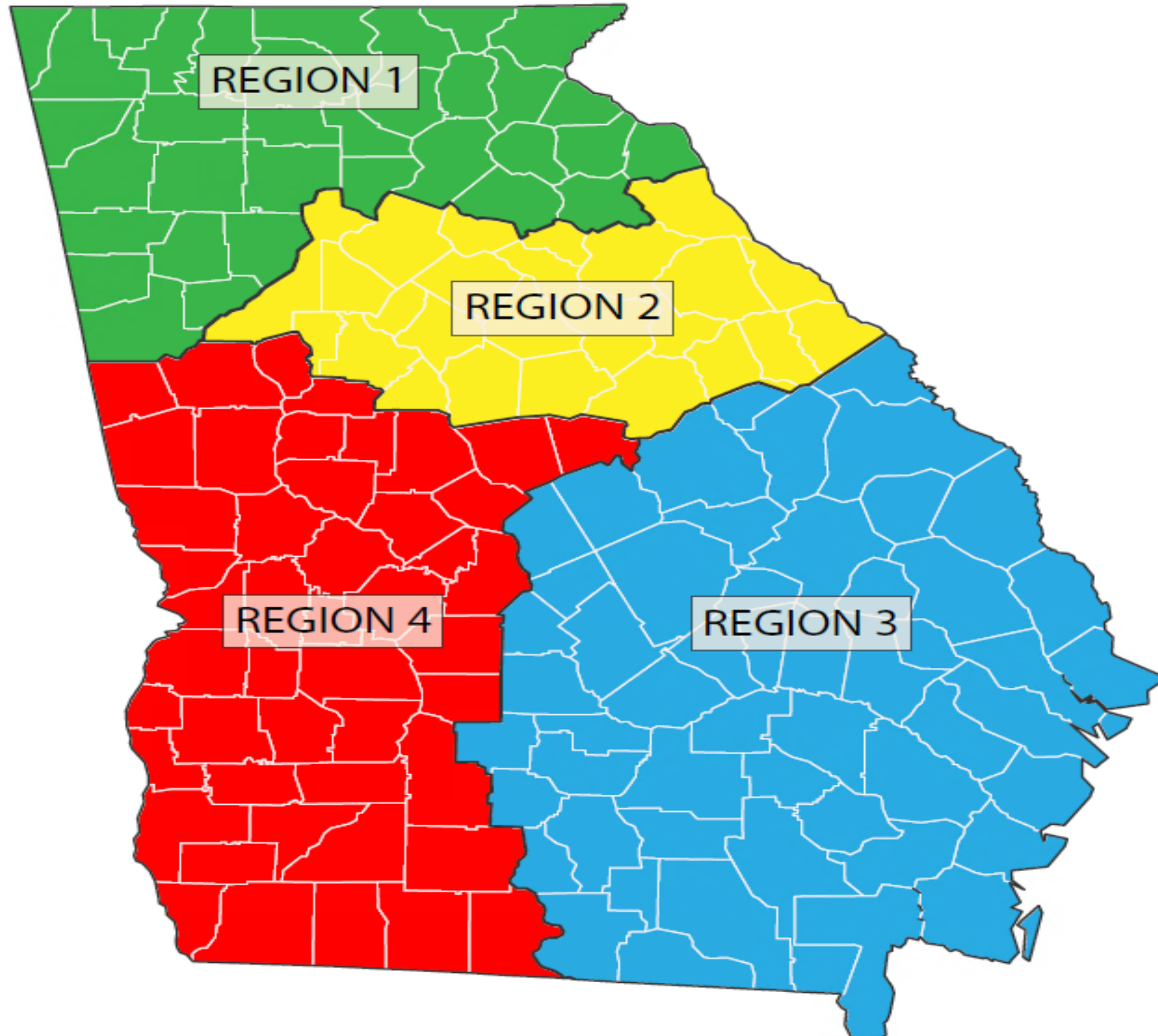
Construction Services

Active Projects by RQAM



2019

GSFIC Regional Quality Assurance Manager and Construction Compliance Specialist Contact List



REGION 1: NORTH

RQAM: RONNIE CHILDERS
ronald.childers@gsfic.ga.gov
404-717-0243

CCS: PATRICK COUCH
patrick.couch@gsfic.ga.gov
678-616-4175
BRYAN COX (Sr. CCS)
bryan.cox@gsfic.ga.gov
678-255-5645
VAN TAYLOR
van.taylor@gsfic.ga.gov
404-427-9425
LARRY KRUL
lawrence.krul@gsfic.ga.gov
404-357-8519
RONALD WILSON (Sr. CCS)
ronald.wilson@gsfic.ga.gov
770-550-3757

REGION 3: SOUTHEAST

RQAM: MARC MEEKS
marc.mEEKS@gsfic.ga.gov
770-550-9842

CCS: JEFF BLEAM (Sr. CCS)
jeff.bleam@gsfic.ga.gov
770-550-3689
GARY BROOKS
gary.brooks@gsfic.ga.gov
404-717-1884
STACY YEOMANS
stacy.yeomans@gsfic.ga.gov
470-432-5050

REGION 2: METRO

RQAM: STEPHEN WILLIAMSON
stephen.williamson@gsfic.ga.gov
404-717-0266

CCS: TINSLEY BAILEY (Sr. CCS)
tinsley.bailey@gsfic.ga.gov
404-548-6838
PETER GROVES (Sr. CCS)
peter.groves@gsfic.ga.gov
770-550-1679
GREG HARDIN
greg.hardin@gsfic.ga.gov
678-674-9383
ELLIOT LONG (Sr. CCS)
elliott.long@gsfic.ga.gov
404-423-3178
RUSSELL NEAL
russell.neal@gsfic.ga.gov
404-548-7125
TOM RAY
tom.ray@gsfic.ga.gov
404-313-8245
TAYLOR WHITE (Sr. CCS)
taylor.white@gsfic.ga.gov
404-991-0678

REGION 4: SOUTHWEST

RQAM: EDDIE HARRIS
eddie.harris@gsfic.ga.gov
770-550-3728

CCS: CHRIS BELL (Sr. CCS)
chris.bell@gsfic.ga.gov
770-550-7962
FRANK CARR (Sr. CCS)
frank.carr@gsfic.ga.gov
770-870-7984
CHRIS COWELL (Sr. CCS)
chris.cowell@gsfic.ga.gov
404-717-0263
EVERETT VICKERY
everett.vickery@gsfic.ga.gov
770-550-3691
DARREL WHITWORTH (Sr. CCS)
darrel.whitworth@gsfic.ga.gov
404-717-0249